

MISSION STATEMENT

The mission of the Athens County Engineer's Office (ACEO) is to serve the citizens of Athens County by building and maintaining a safe and modern county highway system; to respond promptly to reasonable road complaints; to process land surveys and property records accurately; and to be good stewards of taxpayer dollars by developing cost effective solutions for road and bridge maintenance problems.

Annual Budget / Constant Revenue Sources

- Previous Annual Budget
 - 2014 = \$ 4,250,000
- Constant Revenue Sources - 2014
 - K1 Taxes & Licenses = \$ 1,356,056.04
 - Permissive License = \$ 516,223.60
 - Gasoline Excise Tax = \$ 2,334,893.50
 - K4 Sales = \$ 0
 - K3 Fines = \$ 54,007.34
 - K5A Interest = \$ 1,117.28
 - Total = \$ 4,262,297.76

Athens County Roads

- Total County Mileage: 362.3 miles
 - Asphalt Surface: 170 miles
 - Chip and Seal Surface: 162.5 miles
 - Gravel Surface: 29.8 miles
- Note: many chip and seal roads have deteriorated to the point that entire sections are gravel.
- Cost to resurface asphalt roads ≈ \$32,000,000 (assuming 24' wide, 3" thick, \$160/CY)
 - 10 year cycle would be \$3,200,000 per year for 17 miles
 - Assuming 20% local match of CSTP funds = **\$640,000 per year**
- Cost to resurface chip seal roads ≈ \$7,700,000 (assuming 18' wide, current labor/material costs)
 - 7 year cycle of double chip and seal would be approximately **\$1,010,000 per year**

Total Posted & Closed Bridges

1. Athens 120
2. Morrow 104
3. Muskingum 90
4. Richland 90
5. Belmont 75

“Historically, your county had only replaced 1% of its bridges each year whereas the state average is 9%.”...

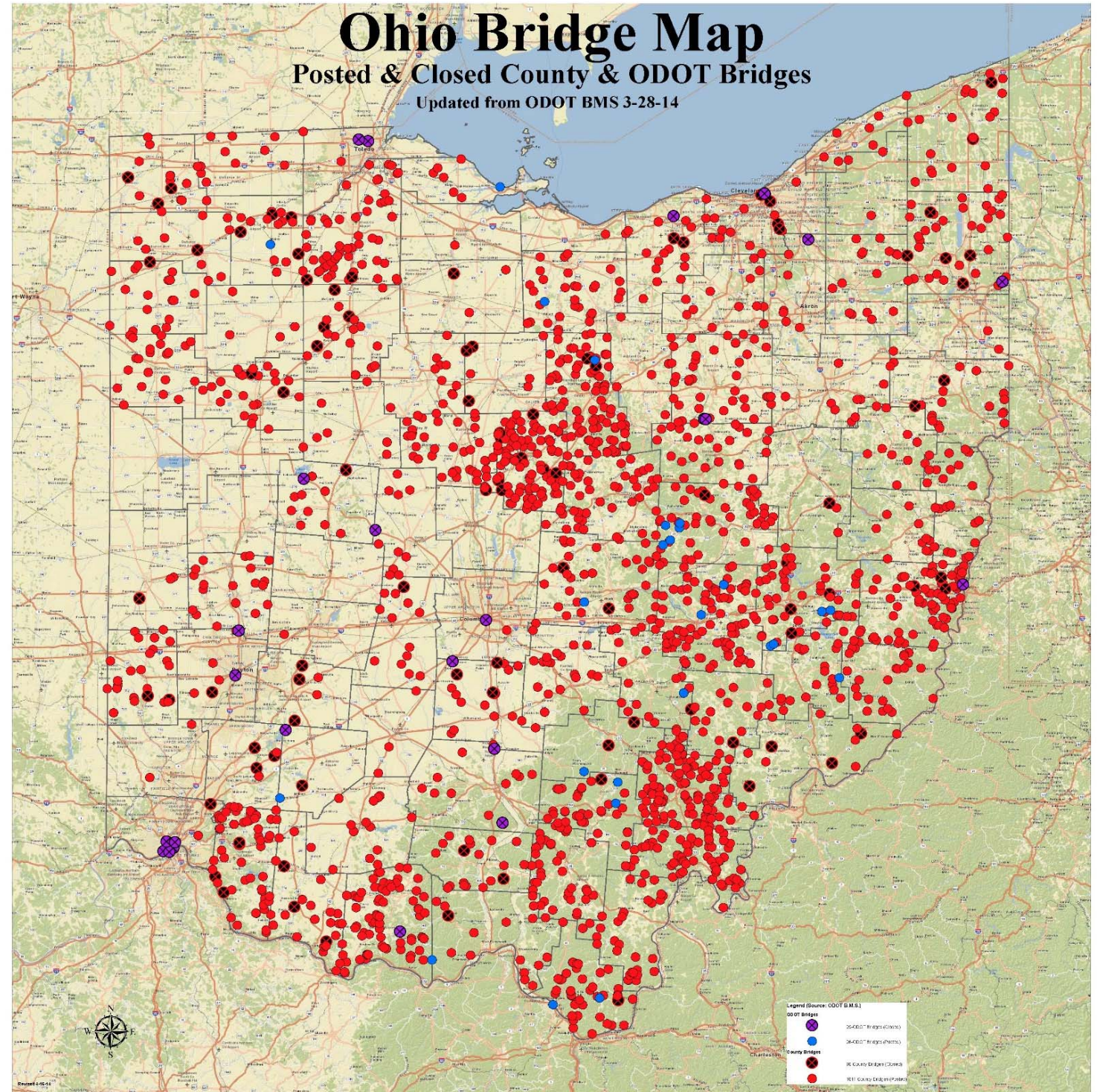
“Your bridges are in worse shape than bridges of the same age statewide.”...

“The number of good bridges (GA=9,8,7) is much lower than the rest of the state.”...

“You have a lot of ‘catching up’ to do before your bridges are in comparable shape to the rest of the state.”

- Mark Stockman
CEAO Federal Bridge QA/QC Engineer

Source for Data and Map: Mark Stockman - CEAO Federal Bridge QA/QC Engineer



Athens County Bridges

- Total County Bridges: 331
 - Bridges with load limits: 115
 - Bridges with GA Rating ≤ 4 : 62
 - Bridges with Sufficiency Rating ≤ 50 : 83
- Problems: Too many stone abutments, use level more during inspection, etc., functionally obsolete widths.
- Cost to replace the 62 structurally deficient bridges \approx \$ 14,400,000 (assuming \$450 per SF)
 - Replacing deficient bridges over 10 years would be \$ 1,440,000 per year
 - Assuming 20% local match of LBR funds = **\$288,000 per year**
- Costs to rehabilitate or replace remaining bridges with load limits not included.

Data Source: Via ODOT BMS from John Wackerly, PE
– Bridge Inspector

REF #	ACCT. #	ACCOUNTS	2014 Actual Expenses	2014 Budget	2015 Proposed Budget	Budget Needed	Notes
1	491.3004.510100	SALARY OFFICIAL	\$90,174	\$91,000	\$90,500	\$90,500	
2	491.3004.510200	SALARIES OFFICE	\$171,303	\$160,000	\$168,000	\$168,000	
3	491.3004.510225	SALARIES ROAD	\$1,117,628	\$1,080,000	\$1,080,000	\$1,150,000	Increase for OT to complete all Chip and Seal
4	491.3004.520200	INSURANCE OFFICE	\$84,995	\$85,000	\$90,000	\$90,000	
5	491.3004.520201	INSURANCE ROAD	\$368,184	\$585,000	\$366,000	\$366,000	
6	491.3004.520202	INSURANCE CLAIMS	\$22,298	\$36,000	\$5,000	\$5,000	
7	491.3004.522100	MEDICARE	\$18,302	\$18,000	\$20,000	\$20,000	
8	491.3004.523100	UNEMPLOYMENT COMPENSATION	\$46	\$25,000	\$1,000	\$1,000	
9	491.3004.524100	WORKERS COMP OFFICE	\$5,016	\$6,000	\$6,000	\$6,000	
10	491.3004.524101	WORKERS COMP ROAD	\$17,000	\$17,000	\$17,000	\$17,000	
11	491.3004.525100	PERS OFFICE	\$35,452	\$36,000	\$37,000	\$37,000	
12	491.3004.525101	PERS ROAD	\$150,891	\$152,000	\$150,000	\$150,000	
13	491.3004.530100	CONTRACT SERVICES	\$125,958	\$50,000	\$50,000	\$50,000	
14	491.3004.530101	CONTRACT REPAIRS OFFICE	\$8,182	\$5,000	\$2,000	\$2,000	
15	491.3004.540100	SUPPLIES OFFICE	\$14,022	\$10,000	\$12,000	\$12,000	
16	491.3004.540102	MATERIALS BRIDGE	\$33,785	\$80,000	\$145,000	\$345,000	Linscott Run Bridge, Hamley Run Box Culvert. Rehab 5 Bridges/year-\$200,000
17	491.3004.540200	FUEL	\$295,790	\$0	\$270,000	\$270,000	
18	491.3004.550100	EQUIPMENT OFFICE	\$24,610	\$15,000	\$5,000	\$5,000	
19	491.3004.550102	EQUIPMENT BRIDGE	\$0	\$9,000	\$10,000	\$10,000	
20	491.3004.550104	BOND EQUIPMENT	\$297,550	\$0	\$60,458	\$60,458	
21	491.3004.560100	OTHER EXPENSE OFFICE	\$10,750	\$5,000	\$40,000	\$40,000	
22	491.3004.560102	OTHER EXPENSE BRIDGE	\$11,908	\$35,000	\$15,000	\$15,000	
23	491.3004.560104	UTILITIES	\$50,731	\$55,000	\$55,000	\$55,000	
24	491.3004.560106	COMPENSATION DAMAGE	\$750	\$1,000	\$1,000	\$1,000	
25	491.3004.560200	ADVERTISING PRINTING	\$10,785	\$10,000	\$7,600	\$7,600	
26	491.3004.560300	TRAVEL	\$2,158	\$5,000	\$5,000	\$5,000	
27	491.3004.570102	BOND TRANSFERS	\$0	\$0	\$81,000	\$81,000	Payments for Backhoe, Hoe-Ram, Hoe-Pack, Pickups
28	491.3014.540100	MATERIALS ROAD	\$1,044,000	\$725,000	\$765,000	\$1,690,000	Just for Chip Seal-\$650,000 stone/emulsion, \$175,000 leveling, \$100,000 culverts
29	491.3014.550100	EQUIPMENT	\$182,132	\$154,000	\$145,000	\$145,000	\$130,542 - Payments for Dump Trucks
30	491.3014.560100	OTHER EXPENSE ROAD	\$318,834	\$550,000	\$339,442	\$339,442	
31	491.3024.530100	CONTRACT PROJECTS - ROAD	\$770,049	\$200,000	\$186,000	\$826,000	20% CSTP Match - Asphalt Paving
32	491.3024.530101	CONTRACT PROJECTS - BRIDGE	\$34,045	\$50,000	\$25,000	\$313,000	20% LBR Match - Bridge Replacements
		TOTAL BUDGET =	\$5,317,328	\$4,250,000	\$4,250,000	\$6,373,000	

Variable Revenues

Item	K5 Other Revenue
Maps, Copies	426.47
Bid Packets	1,650.00
Scrap Metal	12,857.10
Rebates	11.00
Auction Proceeds	43,614.72
RUMA Agreements	43,979.67
	102,538.96

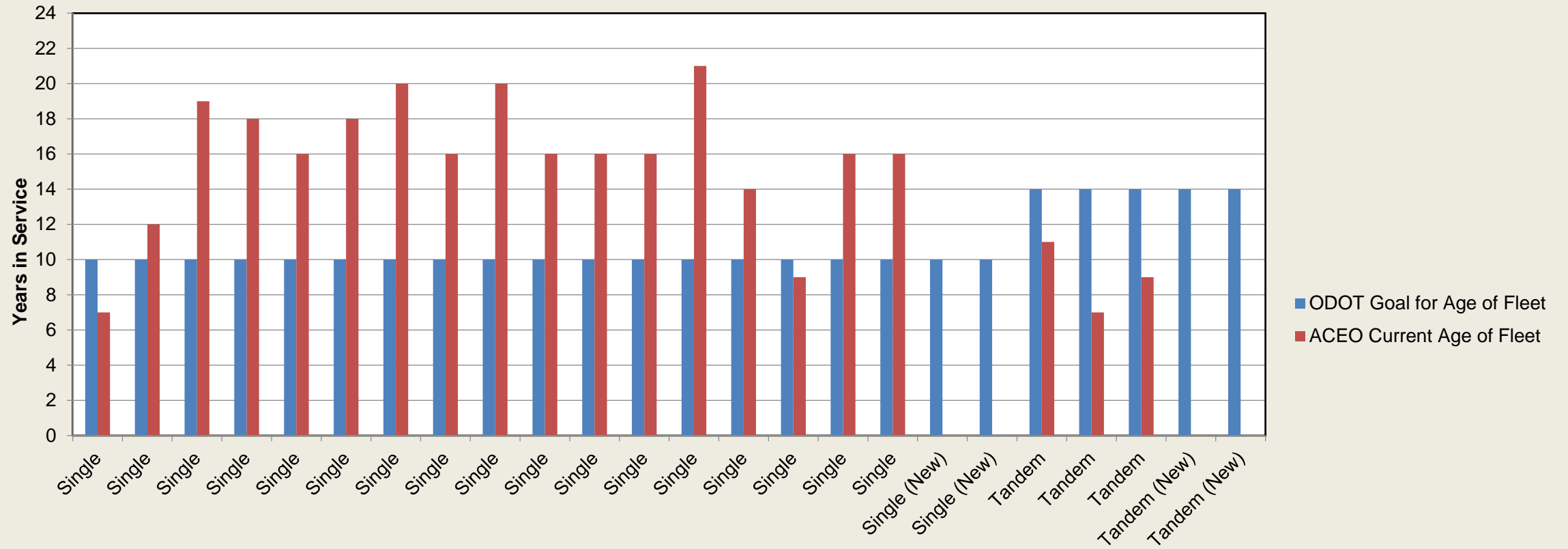
Item	K7 Refunds
Clerk of Courts Refund	85.53
AutoZone Refund	2,111.27
Dell Refund	838.48
Lowe's Refund	115.98
Mac's Thrifty Refund	17.10
CEAO Refund	120.00
	3,288.36

Item	K6 Reimbursements
Restitution/Insurance	4,153.74
Township - Salt Sales	8,227.65
Township - Other	7,383.95
OPWC - Echo Lane	68,500.00
Rebates	6.79
ODOT Bridge Rating	13,584.00
City of Athens - Other	1,720.00
Driveway Culverts	150.00
ODOT TID Grants	300,000.00
OPWC CR 110	63,720.00
	467,446.13

Total K5,K6,K7 = \$ 573,273
 Bond Money = \$ 297,549
 Carryover = \$ 184,208

 Total Variable = \$ 1,055,030

Aging Fleet

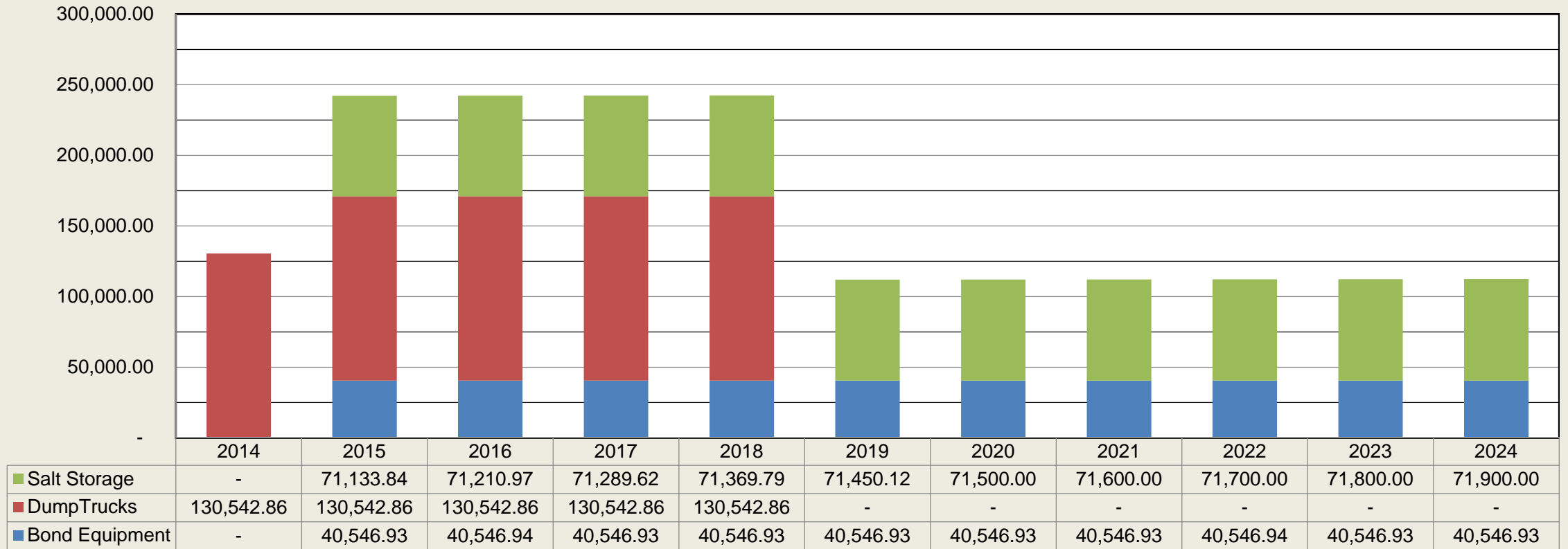


ACEO Fleet - Current Single and Tandem Axle Dump Trucks

Sources: Ohio Department of Transportation, Athens County Engineer's Office

Debt Payments on New Assets

Estimated Debt Payment Schedule 2014-2024



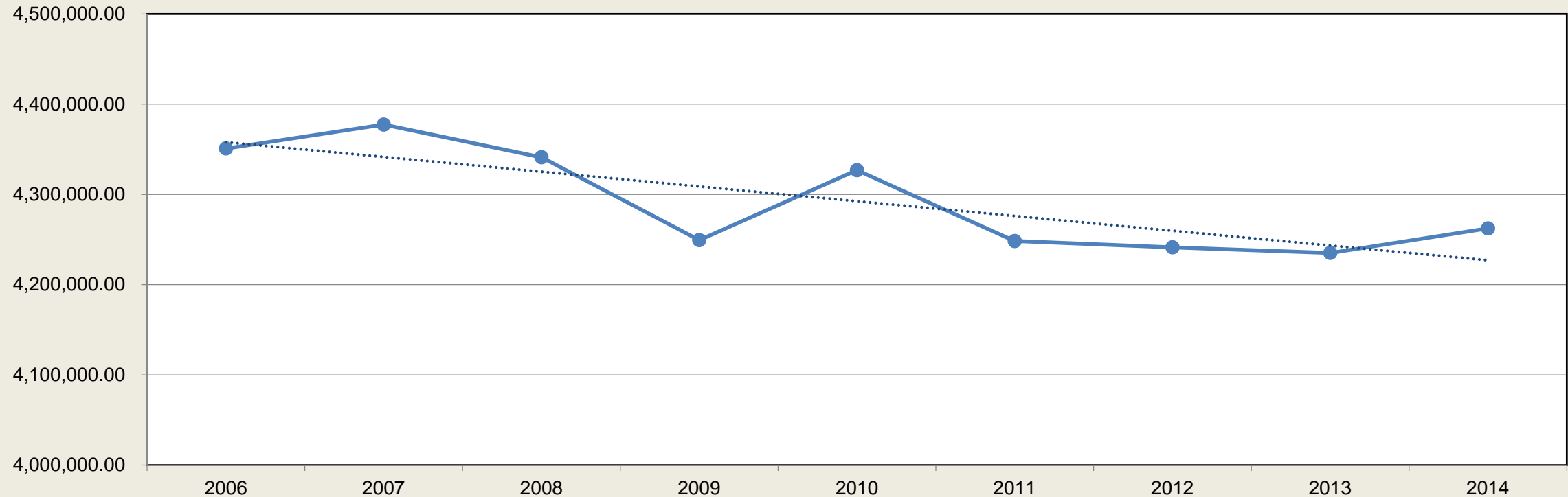
Source: Athens County Auditor's Office

\$358,007 - Backhoe, Hoe Ram, Hoe Pack, Surveying Box, Pickups Bond
 \$624,670 - Western Star Dump Truck Lease [(2) Single Axle, (2) Tandem Axle]]
 \$648,229 - Salt Storage Buildings / Emergency Generator Bond

\$1,630,906 - Total Debt Purchases Dedicated to Update New / Aging Assets

Declining Revenues

2006-2014 Constant Revenue Sources



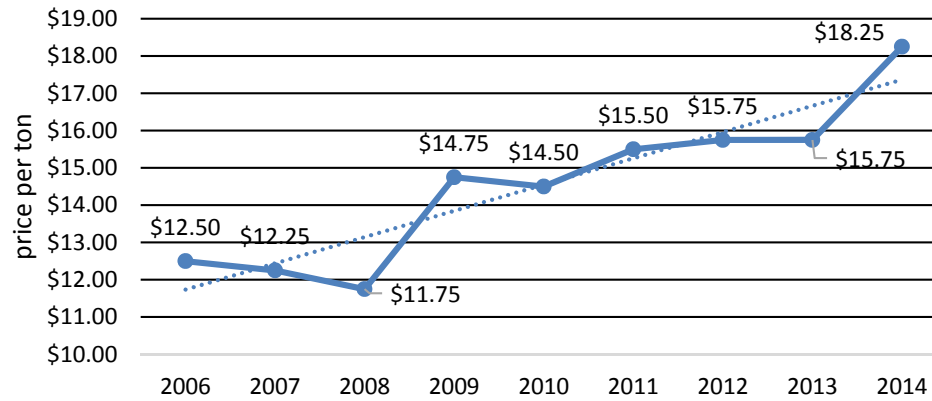
Includes: License Tax, Permissive Tax, Gasoline Tax, Map Sales, County Courthouse Fines, and Interest

Source: Athens County Auditor's Office

	2006	2007	2008	2009	2010	2011	2012	2013	2014
K1 Taxes & Licenses	1,455,197.43	1,415,635.07	1,714,194.76	1,366,042.65	1,393,045.27	1,379,309.68	1,386,220.33	1,355,172.86	1,356,056.04
Permissive License	508,214.21	504,585.35	232,911.62	503,702.35	514,347.91	506,391.22	512,912.56	513,020.79	516,223.60
Gasoline Excise Tax	2,322,444.66	2,396,839.15	2,354,102.36	2,331,702.91	2,366,744.74	2,310,206.90	2,290,681.48	2,299,886.19	2,334,893.50
K4 Sales	596.15	738.90	515.90	239.15	151.13	190.22	216.92		
K3 Fines	61,544.78	53,355.19	36,814.18	46,764.08	51,259.88	50,717.53	50,263.59	65,919.11	54,007.34
K5A Interest	2,877.41	6,197.40	2,603.79	924.00	1,282.82	1,494.65	1,015.52	1,136.40	1,117.28
Constant Revenue Sources =	4,350,874.64	4,377,351.06	4,341,142.61	4,249,375.14	4,326,831.75	4,248,310.20	4,241,310.40	4,235,135.35	4,262,297.76

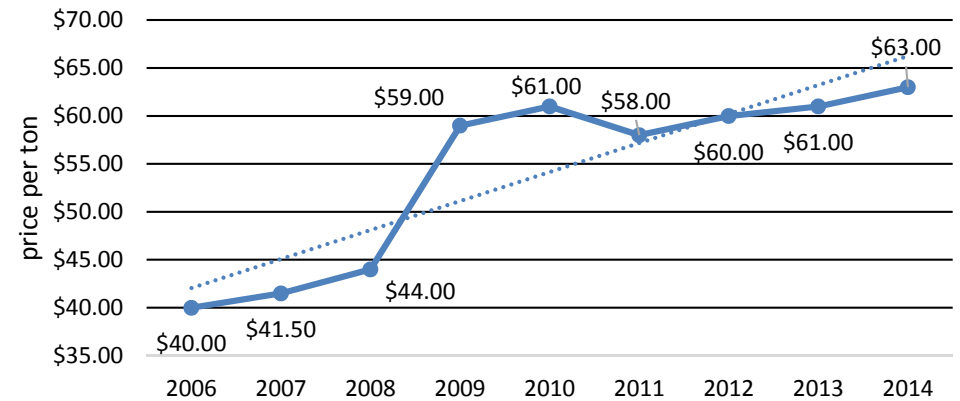
Increasing Material Costs

#67 Stone (Delivered)



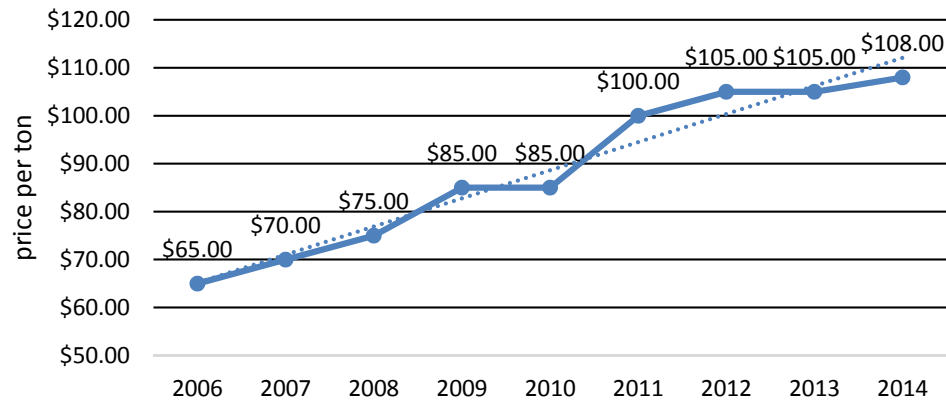
46% increase from 2006
55% increase from 2008

Hot Mix Asphalt



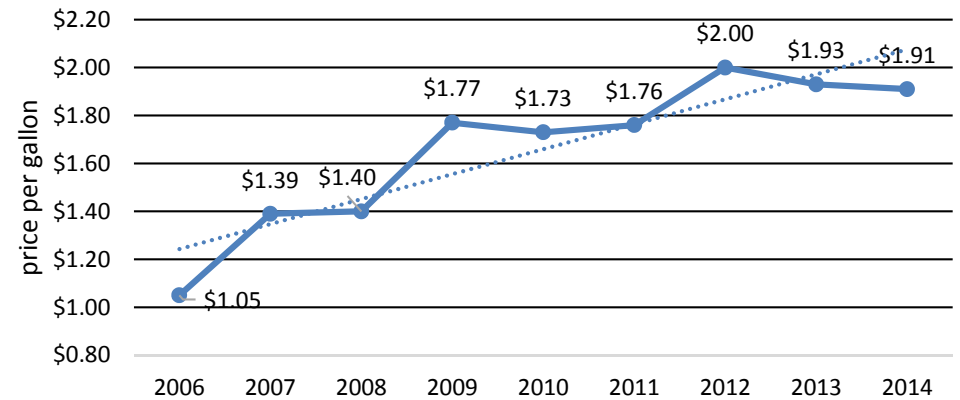
58% increase from 2006
43% increase from 2008

Cold Mix Asphalt



66% increase from 2006
44% increase from 2008

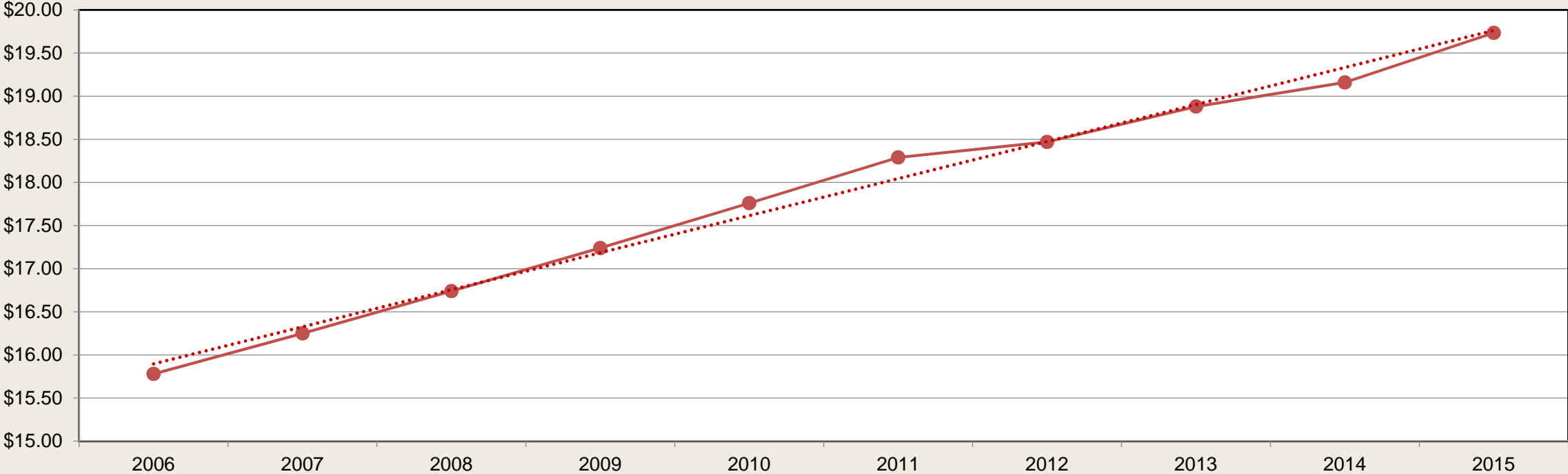
MWS150 Emulsion



82% increase from 2006
36% increase from 2008

Increasing Labor Costs

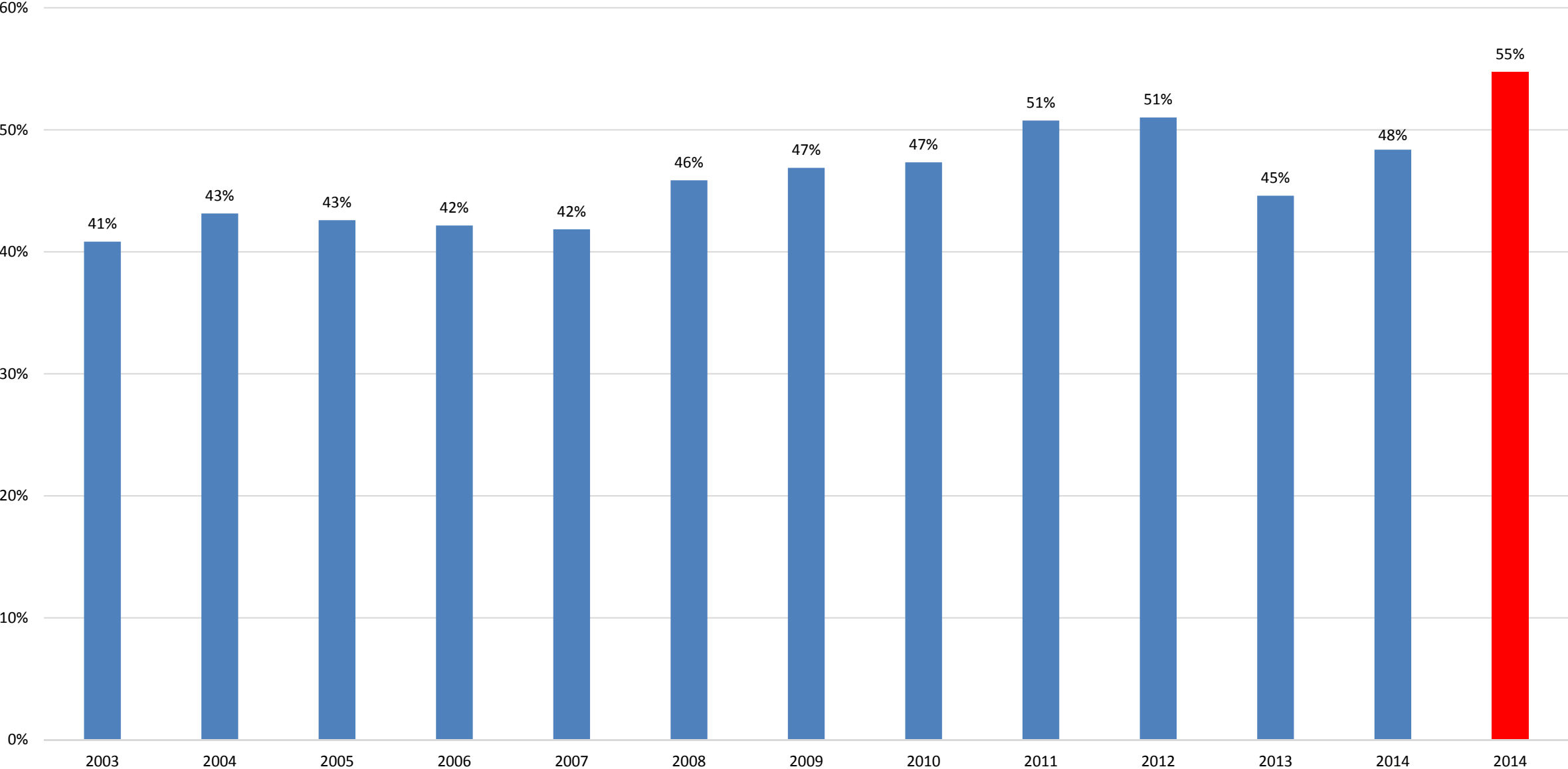
2006-2015 Operator I Base Rate Increases



Rates Effective September 2nd of Prior Year
2015 Figure Assumes 3% Pay Increase

Source: AFSCME Collective Bargaining Agreements

Personnel Cost as % of Constant Revenue



■ 2014 Represents Personnel Costs with Medical Mutual Insurance Rates